

SWATY COMET



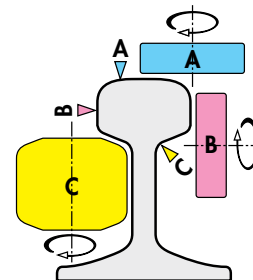
Industrial Grinding Tools

15. RAILWAY GRINDING AND CUTTING





In the production and renewal of railway tracks, various types of grinding tools are used, depending on the place and the grinding method. These grinding wheels are intended for the maintenance of railway tracks as well as for grinding of welds and railway switchpoints using machines intended specifically for this purpose.

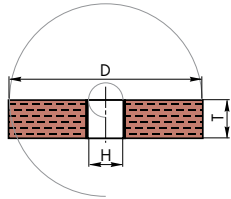


Zone A - railway track head
 Zone B - railway track lateral edge
 Zone C - web



Grinding wheels 1A

For railway track grinding zone B
D x T x H

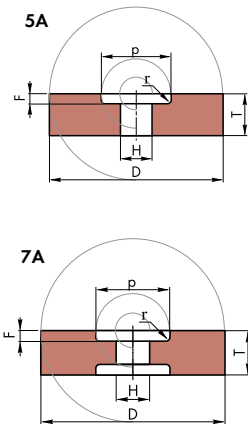


Type	Dimensions (mm)
1A	225x20x22.2
1A	230x20x22.2
1A	230x23x22.2
1A	230x25x22.2
1A	230x23x22.2
1A	230x12x22.2
1A	230x15x22.2
1A	230x21x22.2

STANDARD	EXTRA	SPECIAL
2ZA16/3 Q6BF10	2WA 20/9 Q 6 BX18/985	WA16/3Z+BX18

Grinding wheels 5A and 7A

For grinding of welds zone B
D x T x H - P x F



Type	Dimensions(mm)
5A	300x45x149-240x30
5A	254x25x25-150x18
5A	254x20x25-150x8
7A	250x40x76.2-166x10/10

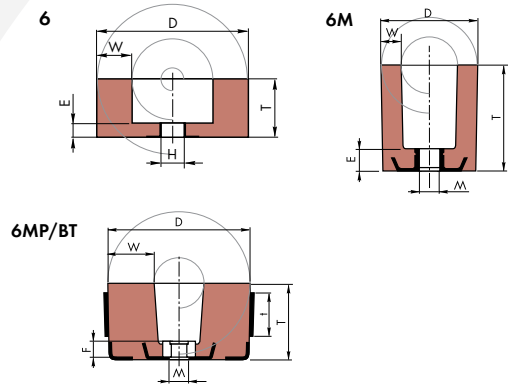
STANDARD	EXTRA	SPECIAL
3A14P4B13	2WA 20/9 P6 BX18/985	WA16/3Z+BX18



Grinding cups 6

for grinding of welds zone A

D x T x H x E x W



Type	Dimensions (mm)
6	100x110x22-W17E20
6M	100x110xM20-W20E20
6M	100x110xM20-W20E20
6M	100x110xM20L-W20E20
6M	125x65xM20-23P,W37,E12
6M	125x65xM20-23P,W37,E12
6M	125x65xM20-23P,W37,E12
6M	125x90xM20-23P, W37, E12
6MP/BT	150x80xU5/8''-20P-W49,5E20
6MP/BT	152x80xM20-20P-W51 E 20

STANDARD	EXTRA	SPECIAL
3A20/3P4B13, 2ZA16/3 Q6BF10	2WA 20/9 Q 6 BX18/985	WA16/3Z+BX18

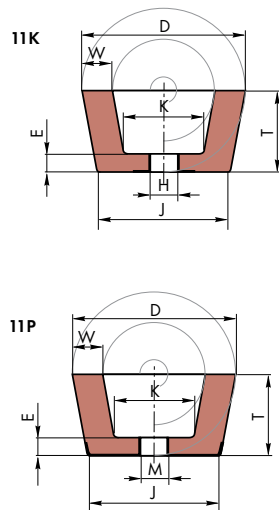
Grinding cups 11

For grinding of railway track weld profile

D x T x H x W

Applications:

Manual grinding with an angle grinder (phy 180 mm) in places where machine grinding is not possible due to lack of access.



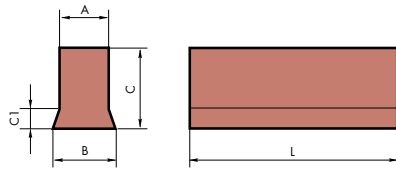
Type	Dimensions (mm)
11K, 11P	110/90x55x22.2-W20
11K, 11P	110/90x55x22.2-W20

STANDARD	EXTRA
3A16/3P4B	3WA 20/9 S2 BX05



Grinding segments 31S..

For grinding of welds zone A
B/A x C/C1 x L

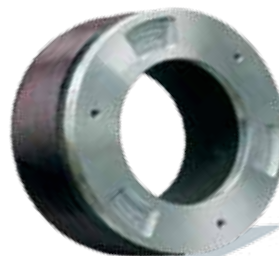
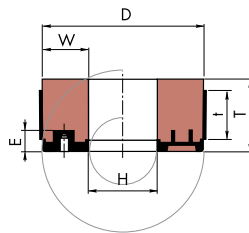


Type	Dimensions (mm)
31S28A-1	60/69x90x158
31S39	71/57x86x290
31S44	69.5/56x90x300

STANDARD	EXTRA
3A20 M4B	2WA 20/9 P6 BX18/985

Grinding rings 35L

For grinding of welds zones A and B
D x T x H x E x W



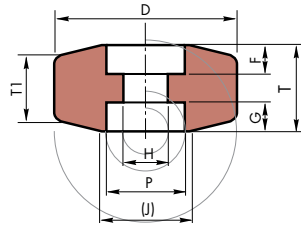
Type	Dimensions (mm)
35L	260 x 82 x 154
35L	260 x 82 x 154
35L	260x35x195
35/BT	180 x 105 x 90
35L	260x28x195
35L	280x30x210
35L	280x32x210

Order printout sample:
35L 260x35x195
2WA 20/9 Q P6 BX18/985

STANDARD	EXTRA	SPECIAL
ZA12/9 T6 B64	2WA 20/9 P6 BX18/985	WA16/3Z+BX18

Grinding wheels 7Y2

For grinding of zone C
D x T x H - P x F



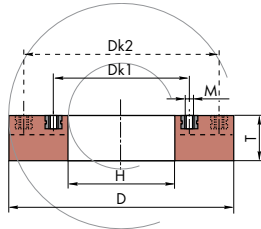
Applications:
Grinding of connecting chambers
with machines intended
specifically for this purpose.

Type	Dimensions (mm)
7Y2-5	135 x 95/70 x 25,4 - 55 x 30/30 - R17 V14
7Y2-11	135x74/61x25,4 20/20-R8V12,5
7Y2-10	135x74/61x25,4S-55x22,5/22,5

STANDARD	EXTRA	SPECIAL
3A20Q4B	57A24/3P4B13S	2WA 20/9 P6 BX18/985

Grinding wheels 36

For grinding of welds zone A
D x T x H



Type	Dimensions (mm)
36/5	150x72x57-4/M8-15A
36/5	150x75x57-4/M8-15A
36/5	150x75x57-4/M8-15A
36/2	125x60x55-4/M8-15A
36/2	125x60x55-4/M8-15A
36/2	125x60x55-4/M8-15A
36/2	125x60x55-4/M8-15A
36/2	125x60x55-4/M8-15A
36/2	125x60x55-4/M8-15A
36/2	125x60x55-4/M8-15A
36/5	150x72x57-4/M8-15A
36/5	150x75x57-4/M8-15A
36/5	150x75x57-4/M8-15A

Order printout sample:
36/5 150x72x57-4/M8-15A
2WA 20/9 Q 6 BX18/985

STANDARD	EXTRA	SPECIAL
3A20/3P4B13, 2ZA16/3 Q6BF10	2WA 20/9 Q 6 BX18/985	WA16/3Z+BX18



Cutting-off wheels 41

D x T x H



These cutting-off wheels are intended for free-hand cutting, making of isolation cuts, welded gap preparation, railway track coating, etc.



Type	Dimensions D x T x H mm	Peripheral speed m/s	RPM 1/min	Reinf.	Package unit pcs.
41	300 x 3 x H	80	5100	E	25
41	300 x 4 x H	100	6400	E	
41	350 x 3 x H	80	4400	E	10
41	350 x 4 x H	100	5500	E	
41	400 x 3 x H	80	3850	E	
41	400 x 4 x H	100	4800	E	

mm

H	20	22,23	25,4
---	----	-------	------

Upon customer request, cutting-off wheels may be produced with a hole (H) as per agreement.



STANDARD	EXTRA	SPECIAL
3ZA24P-BF	45A24Q-BF	74A20R-BF



SWATYCOMET, umetni brusi in nekovine, d.o.o.
Titova cesta 60, 2000 Maribor, Slovenia
t: +386 (0)2 3331 600, (0)3 7575 000
f: +386 (0)2 3331 790, (0)3 7575 100
www.swatycomet.si, e: info@swatycomet.si



Toroflex Schleifmittel, GmbH
Esbachgraben 17, 95463 Bindlach - Germany



Cobra, GmbH
St. Michael 47, 9143 Bleiburg - Austria



SWATY - INPO, d.o.o.
Titova cesta 60, 2000 Maribor - Slovenia



Ecopack, d.o.o.
Tovarniška 5, 3214 Zreče - Slovenia